

2026

# NEW GARAGE DOORS FOR EVERY HOME

MODERN STYLES, INSULATED OPTIONS, AND PROFESSIONAL INSTALLATION IN OTTAWA



**OTTAWA**  
**GARAGE**  
**DOORS**  
& OPENERS

# Get the perfect garage door for your home



**EXPERT INSTALLATION & REPAIR.  
QUALITY PARTS, EXPERT SERVICE.**

**Polyurethane R-18  
Steel Thickness 26 GAUGE**



[info@ottawa-garage-door.com](mailto:info@ottawa-garage-door.com)



**LiftMaster**

**CHAMBERLAIN**

**For More Information  
[ottawa-garage-door.com](http://ottawa-garage-door.com)**



**(613) 627-3028**

Specializing in the wholesale and retail of various types of residential and commercial garage doors, panels, and accessories.



## High-Quality 2" Polyurethane Insulation Panels

A wide range of styles, aesthetically pleasing, durable, and energy-efficient.



## Locally Manufactured

Fast delivery times, ensuring high-quality products.



## Professional Installation & Repair

We work closely with local, skilled technicians to offer reliable, cost-effective, and fast installation and repair services.



### POLYSTYRENE

- 1 R-values range from 6.3 to 12.9
- 2 Polystyrene sheets bonded to steel
- 3 More economical
- 4 Increases comfort of the garage
- 5 Two or three-layer construction
- 6 Reinforces steel to help resist dents and vibration when opening or closing

VS



### POLYURETHANE

- 1 R-values range from 18.4 to 20.4
- 2 Liquid foam expands to fill the entire steel cavity
- 3 More expensive
- 4 Keeps garage 10 - 20 degrees warmer in the winter and cooler in the summer
- 5 Three-layer construction
- 6 Adds strength and rigidity to steel to better resist dents; the door is quieter

# We are proudly made in Canada!

We have an ample supply of professional accessories and have established long-term, extensive cooperation with experienced garage door installation technicians in the industry. We provide you with safe and prompt installation and repair services.



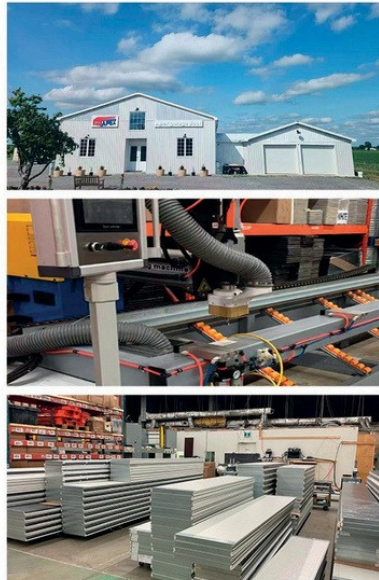
## COLOR OPTIONS

A rich selection of classic colours, perfectly paired with various model patterns and layouts.

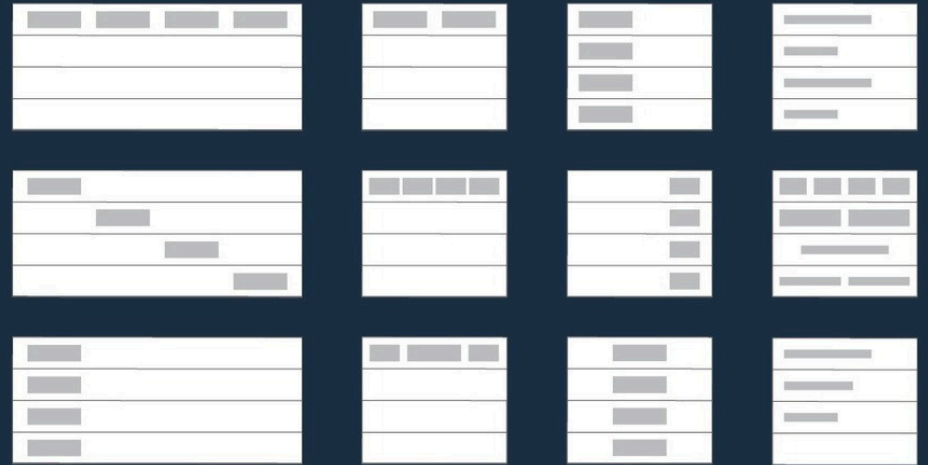


\* The actual colour is subject to colour sample.

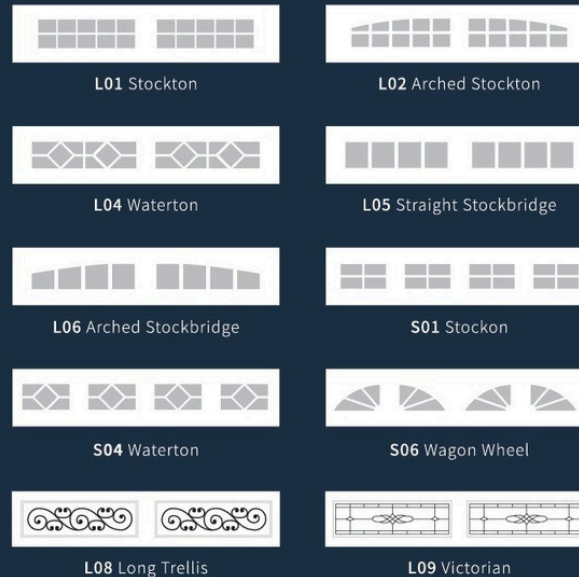
## OUR FACTORY



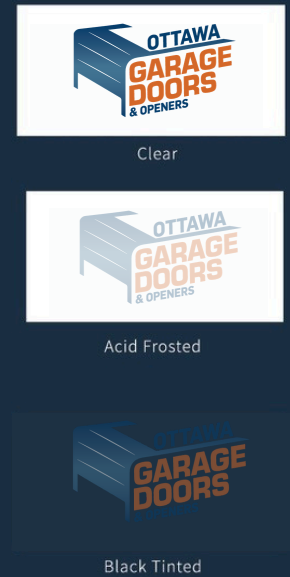
## WINDOWS FRAME



## WINDOWS INSERT

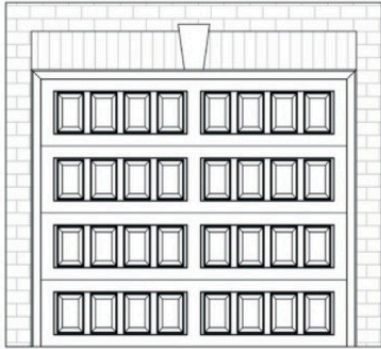


## GLASS



# SLIM 200

## DOOR DESIGN

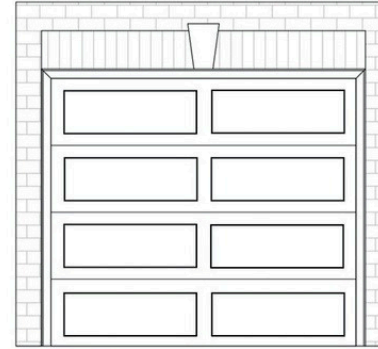


## COLOR OPTIONS



# SHAKER XL 700

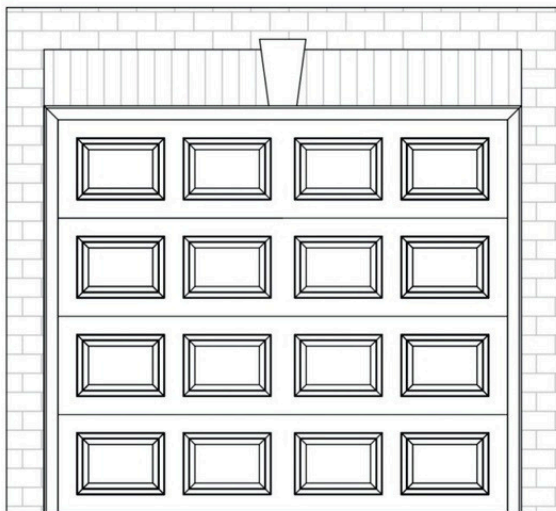
## DOOR DESIGN



## COLOR OPTIONS



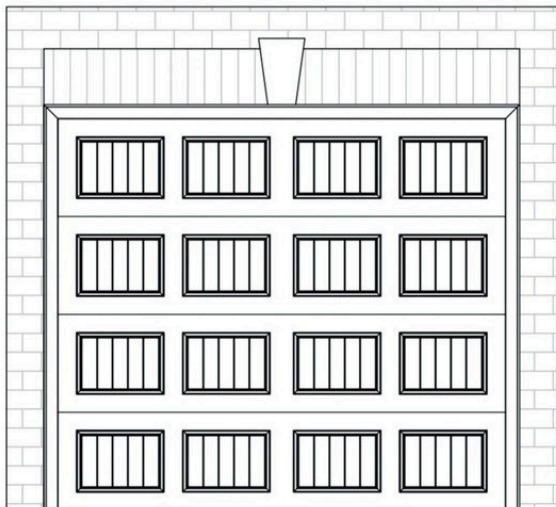
DOOR DESIGN



COLOR OPTIONS



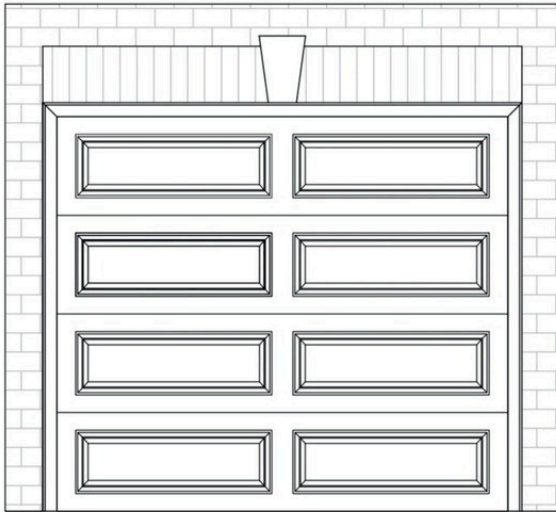
## DOOR DESIGN



## COLOR OPTIONS



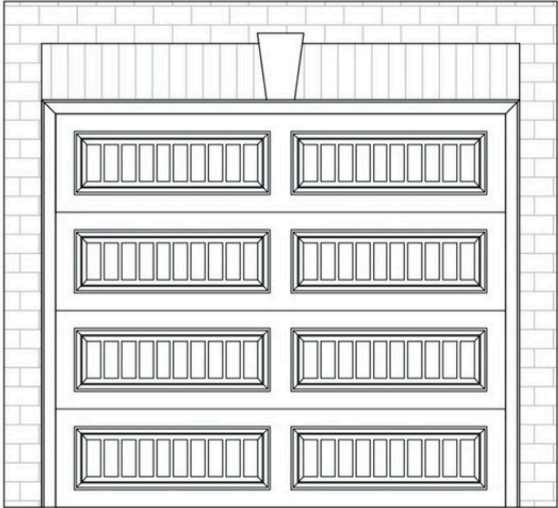
DOOR DESIGN



COLOR OPTIONS



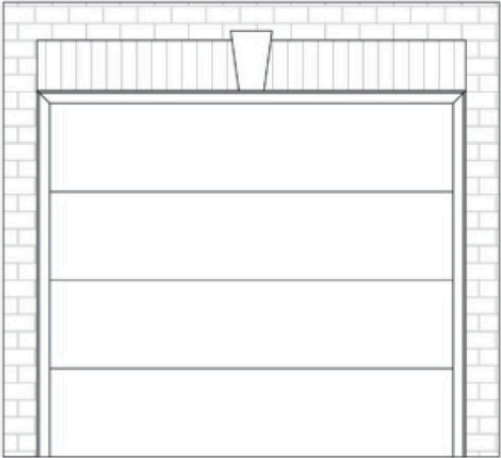
DOOR DESIGN



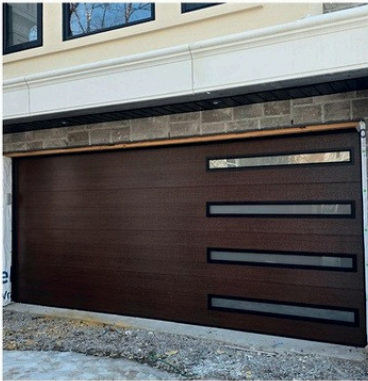
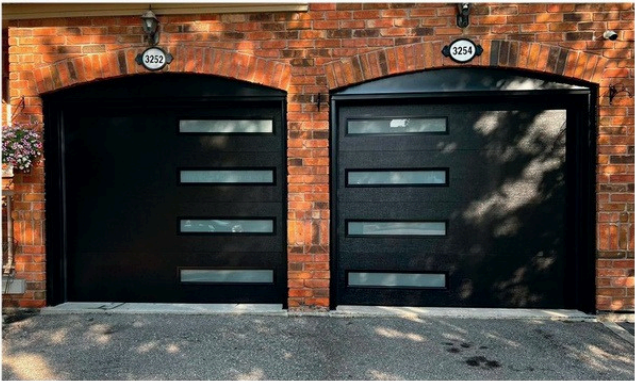
COLOR OPTIONS



DOOR DESIGN



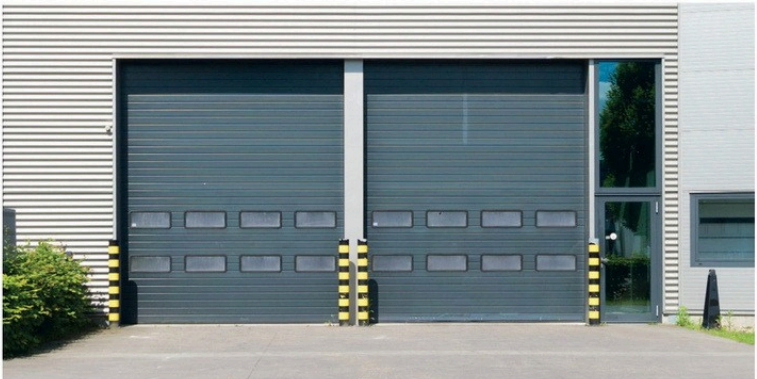
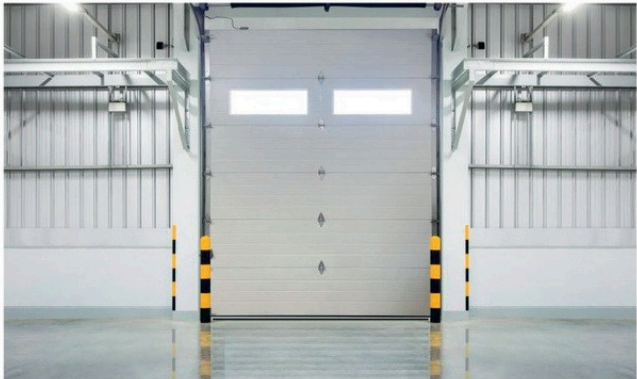
COLOR OPTIONS



DOOR DESIGN



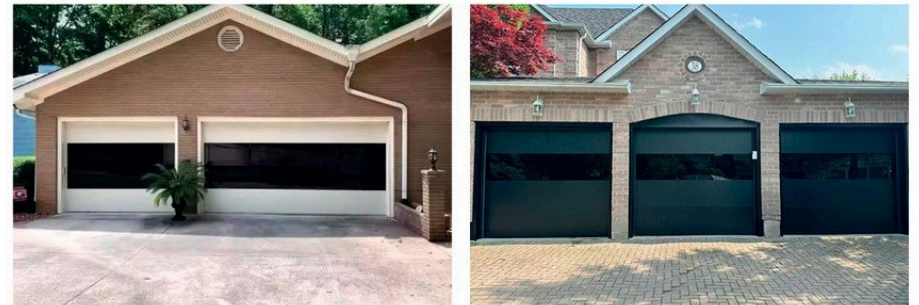
COLOR OPTIONS



## ALUMINUM FULL VIEW



## ALUMINUM FRAMELESS



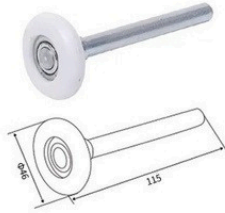
# RESIDENTIAL HARDWARE

## Spring Torsion



Inside Diameter 1.75", Springs, Torsion Springs

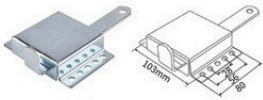
Yellow	24" .207 1-3/4
White	30" .218 1-3/4
Red	29" .225 1-3/4
Brown	32" .234 1-3/4
Green	33" .243 1-3/4
Gold	35" .250 1-3/4



Garage Door Rollers – Ultra Quiet Stem Nylon



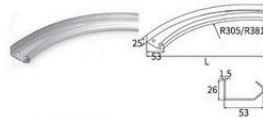
Emergency Lock Quick Release



Catch With Spring  
Bright zinc plated steel  
Spring actuated lock bar  
Designed for 2" or 3" track  
Slotted mounting holes  
Spec.out casset 100mm\*100mm



Vertical Track  
Thickness(mm):1.5  
Thickness(mm):1.8  
Thickness(mm):2.0  
-Galvanized Steel  
-Cold rolling format  
-Outside diameter(mm):53



Curve Track  
Thickness(mm):1.5  
Thickness(mm):1.8  
Thickness(mm):2.0  
-Galvanized Steel  
-Outside diameter(mm):53  
-R=305,381 is also available  
It is suitable for roller diameter(mm):46



Handle parts for panel

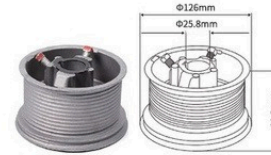


Handle parts for panel

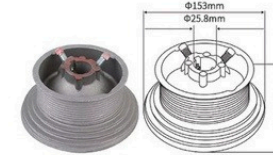


Hardware parts for 8X7

# COMMERCIAL HARDWARE



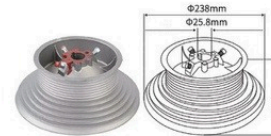
Max.door height (mm): 3692  
Max.cable diam (mm): 4  
Max.door weight (kg): 341  
Diam.Shaft (mm): 25.4  
distance up to shaft axis (mm): 86



Max.door height (mm): 5650  
Max.cable diam(mm): 4.8  
Max.door weight (kg): 250  
Diam.Shaft (mm): 25.4  
distance up to shaft axis (mm): 127



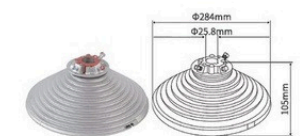
Vertical lift (mm): 1372  
horizontal lift(mm): 3048  
Max.door weight (kg): 890  
Max.cable diam (mm): 5  
Diam.Shaft (mm): 25.4  
distance up to shaft axis (mm): 111



Max.headdoor (mm): 3048  
Max.door height (mm): 3658  
Max.cable diam (mm): 5.0  
Max.door weight (kg): 455  
Diam.Shaft (mm): 25.4  
distance up to shaft axis (mm): 127  
2screws or 3screws



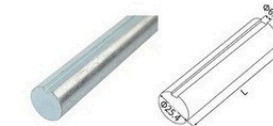
Max.door height (mm): 3352  
Max.cable diam (mm): 5  
Max.door weight (kg): 385  
Diam.Shaft (mm): 25.4  
Distance up to shaft axis (mm): 127  
2screws or 3screws



Max.door height (mm): 5486  
Max.cable diam (mm): 5  
Max.door weight (kg): 450  
Diam.Shaft (mm): 25.4  
Distance up to shaft axis (mm): 152



Max.door height (mm): 8534  
Max.cable diam (mm): 6  
Max.door weight (kg): 1000  
Diam.Shaft (mm): 25.4  
Distance up to shaft axis (mm): 178



Zinc Plated  
Solid steel shaft with keyway  
L=5.85m



Overall Length: 27"  
Galvanized plated steel  
Push down bumper spring-27"  
approximate compression: 10 lb/in.  
15"Travel  
2" diameter rubber bumper  
12 gauge bracket for 3/8"bolts